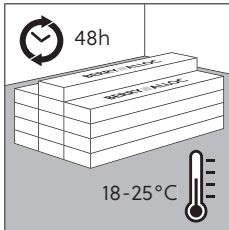


# pure installation manual

Version: 27/04/2021

Pure is suited for both residential and commercial areas such as shops, hotel rooms, etc. To obtain a perfect result, we recommend that installation instructions are followed carefully.

## 1. PREPARATION

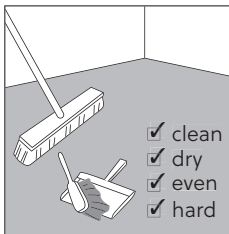


### TRANSPORT AND STORAGE

Transport your floor carefully on a flat surface. Planks should be stored and transported flat in their packaging, in small neat piles, max. 5 boxes high. It is recommended not to place the boxes down on the short side as this can cause damage to the locking system.

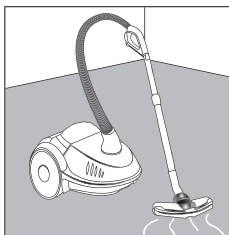
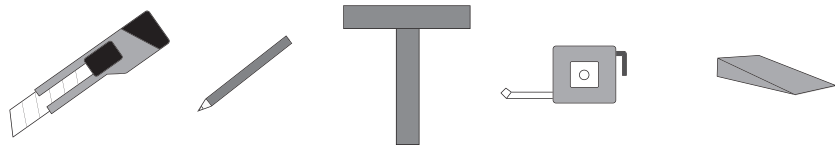
It is important to store the planks for at least 48 hours at room temperature (18-25°C) before installation. Make sure the packs are spread out so they all have the chance to adjust. This temperature should be maintained throughout the installation and for least 24 hours after installation.

Storage: Pure must be stored inside.



### TOOLS

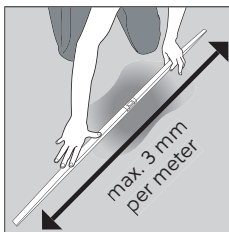
Trimming knife, saw or guillotine, pencil, T-square, measurer and spacers (wedges). Additionally for skirting boards and profiles: power drill.



### SUBFLOOR

Careful subfloor preparation is essential for an excellent result. Roughness or unevenness in the subfloor may telegraph through the new floor, resulting in an unsightly surface and causing excessive wear on high spots, damage to the locking system or indentation on lower spots.

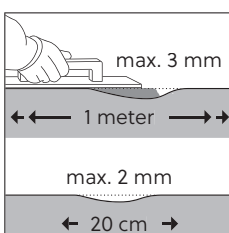
Remove all traces of plaster, paint, glue, oil, grease, etc. The subfloor must be clean, flat, dry and stable. Remove textile floor coverings (such as carpet, needle felts, etc.) Remove all debris (including nails) and vacuum.



Pure can be installed on top of concrete, tiles, wood and most existing hard surface floor coverings, provided that the subfloor is smooth, dry and clean. It is not suited to be installed on soft surface floor coverings s.a. carpet, cushion vinyl or cork unless the subfloor acts as an underlay and complies to the prescriptions.

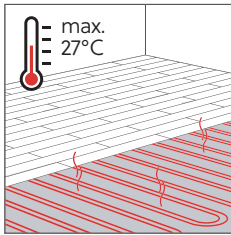
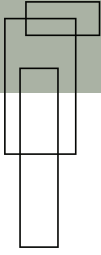
Although Pure is impervious to moisture, subfloors must be checked for moisture problems. If there is moisture, carry out sealing before installation. Excessive moisture can generate mould or fungus.

Depending on your subfloor, a moisture barrier/ damp screen might be necessary. When properly installed with aluminium adhesive tape, our Dreamtec+ underlay functions as a dampscreen.



Make sure floor level deviation is a maximum of 3 mm per m, and 2 mm per 20 cm. If these margins are exceeded, the subfloor must be evened out with a suitable filler or levelling compound, and a check must be carried out to determine if a sealer is needed.

If you are not certain about the quality or suitability of your subfloor for the installation of Pure, then contact your dealer, who will be more than happy to help you.



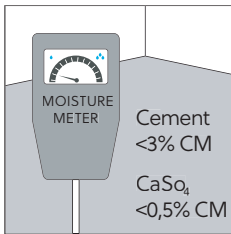
## Underfloor cooling and heating

Floor heating is also possible, provided that the heated floor temperature does not exceed 27°C. Only underfloor heating systems with heating components – hot water or electric – embedded in the floor are suitable. Heating films or other systems that are placed ON the screed or subfloor are not suitable.

Switch off or lower the underfloor heating to 15°C 48 hours before installation and during installation. 24 hours after installation, increase the underfloor heating gradually by 5°C daily, up to a maximum floor temperature of 27°C. With electrical underfloor heating, we advise not to exceed 60W/m<sup>2</sup>.

The subfloor construction (surface) of the heating system must be hard.

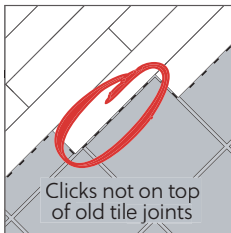
Floor cooling uses the same systematic as the indirect floor heating systems. It is important that the system is advanced enough to avoid condensation under the floor. Otherwise fungi can start to grow. If the system is advanced enough, it can without doubt be installed in combination with our floors.



## Preparation of concrete/screed subfloor

Let new concrete dry sufficiently. The moisture content of the subfloor must be less than 75 RH at min. 20°C. Max 2% CM for cement and 0.5% for anhydrite. Where there is underfloor heating, moisture content should be less than 1.8 CM%, and 0.3 CM% for anhydrite. Always record and keep your moisture content results.

Repair surface imperfections with an appropriate repair compound and check if a primer or sealer is needed. Vacuum the subfloor afterwards to remove all debris.



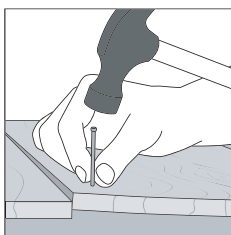
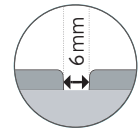
## Preparation of tile subfloor

Check the subfloor for moisture problems.

The joints of the Pure floor covering should never be aligned with the underlying tile joints.

It is not necessary to fill the grouts of a subfloor comprised of ceramic tiles with joints when these do not exceed 6 mm in width.

When installing Pure on a tile subfloor, use the Dreamtec+ underlay to overcome surface imperfections.

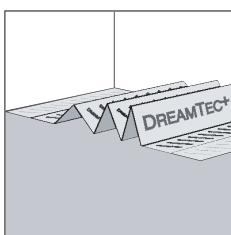


## Preparation of wooden subfloor

Check the floor for insect infestations.

Make sure the subfloor is level and nail down loose sections.

Wooden subfloors should always have access to air and should be ventilated.

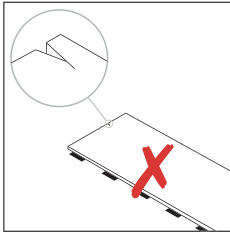


## UNDERLAY

We advise using the BerryAlloc LVT underlay (Dreamtec+) to reduce walking and sound transmission performance. Other underlays might be used if they have a thickness of maximum 1.5mm and a compressive strength of more than 400kPa. We do not guarantee any acoustic or insulation properties with third party underlays.

# pure installation manual

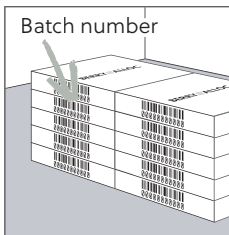
## 2. PRECAUTIONS



Pure is not suitable for outdoor use and verandas/wintergartens. Ensure that the indoor temperature is always kept above 5°C and ideally between 18 and 25°C.

Avoid long-lasting exposure to direct sunlight (direct meaning without a glass or window barrier). When the necessary expansion gaps are installed and the temperature is maintained within the temperature limits, Pure can be installed in front of large windows.

Check all planks for visible defects in optimal light conditions, both before and during installation. Planks with defects must not be used.



Make sure that you mix panels from different boxes, in order to minimize shade variations. This will ensure a more natural looking floor.

Pure cannot be used in areas where drainage systems have been incorporated into the floor.

For tiles: use only a single production batch number for each installation.

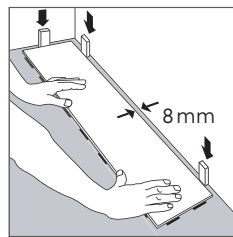
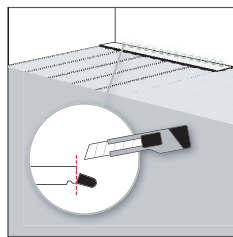
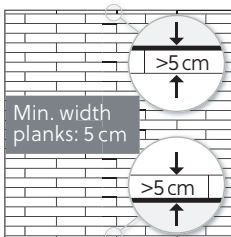
For tiles and planks: Always keep the production batch number (printed on the box), together with your order form/invoice.

## 3. INSTALLATION

Check that the floor planks have no visible defects before installing them.

Pure should be installed so that it is 'floating'. This means that there should be sufficient space between the floor and all walls or any fixed objects, so that the floor can move in any direction, i.e. it should not be screwed or nailed down to the subfloor.

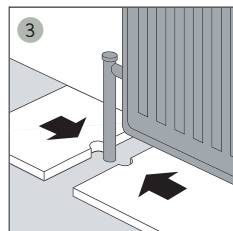
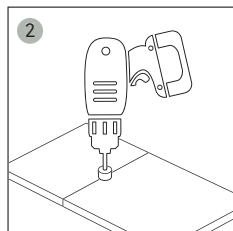
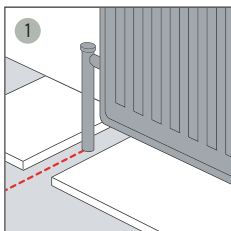
The installation of the floor must be the final operation in the project. Exceptionally heavy furniture, such as kitchen cabinets, fireplaces, system walls etc., cannot be installed on top of the flooring, as this restricts the floor's ability to expand.



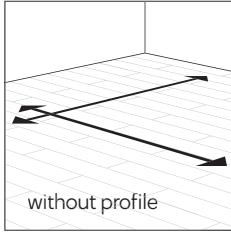
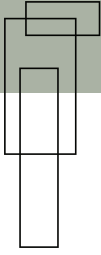
Measure the room to create a balanced layout. By measuring, you will be able to determine if the first row needs to be cut. The first and last rows should not be less than 5 cm wide.

If the first row of panels does not need to be trimmed in width, you must remove the locks on the side that faces the wall.

It is important to leave an expansion gap around the total perimeter of the floor and around columns, pipes, thresholds etc. This expansion gap should measure at least 8mm and increase with 1mm once the installed floor exceeds 8 meter (example: if the room measures 15x15m, the expansion gap should be 15mm around the perimeter). It needs to be noted that the expansion gap can measure at most 15 mm.



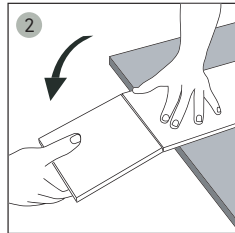
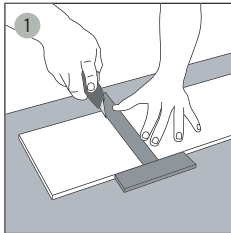
# pure installation manual



The largest recommended installation area depends on the room temperature.

- 5-25°C (Heating, Ventilation & Air Conditioning): 30x30m
- 5-40°C (normal): 15x15m
- 5-70°C (extreme): 5x5m

An expansion profile must be used if the area is bigger than recommended for the room temperature. In general it is not necessary to use an expansion profile in door openings when the expansion gaps are respected and the room temperature is the same, unless one of both rooms uses floor heating/cooling. Please ensure the floor remains a floating installation at all times.

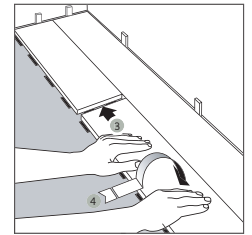
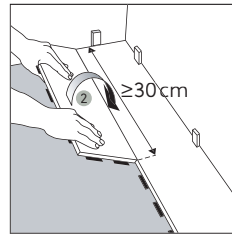
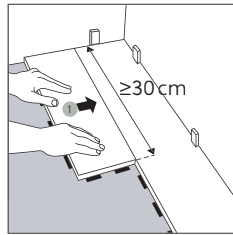
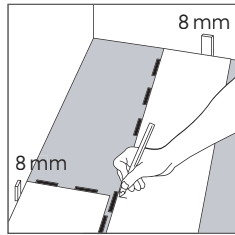
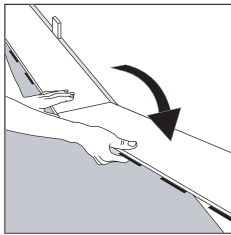


In commercial applications, we recommend using metal BerryAlloc profiles.

Do not use a hammer to put planks together.

Cut boards with a trimming knife, decor side up.

## PLANKS

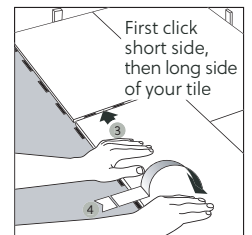
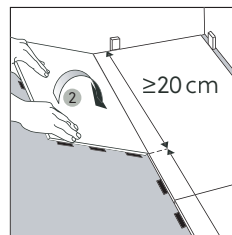
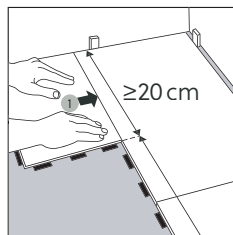
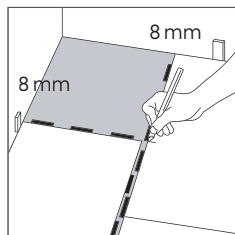
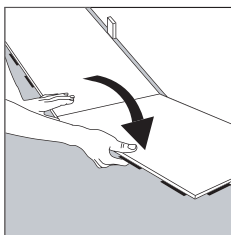


Always ensure that the short end joints are staggered by a minimum of 30 cm (= 3 click elements) when you start the next row. Use the leftover piece from the previous row as the first piece of the next row, provided that this piece is at least 30 cm long. In order to find a connection with the locking tabs of the previous row, it may be necessary to cut off an extra part of the leftover piece.



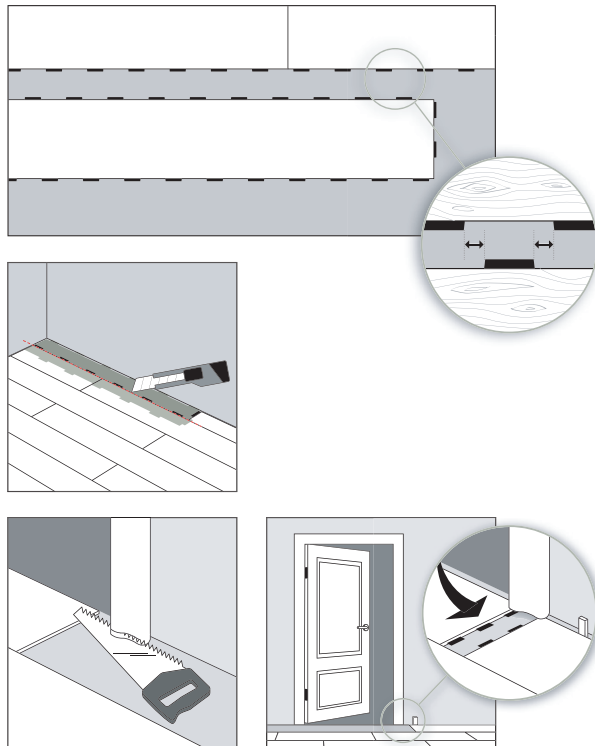
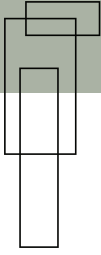
Pure planks can be installed in a variety of different patterns.

## TILES



Always ensure that the short end joints are staggered by a minimum of 20 cm or 2 click elements when you start the next row. Use the leftover piece from the previous row as the first piece of the next row, provided that this piece is at least 20 cm long. In order to find a connection with the locking tabs of the previous row, it may be necessary to cut off an extra part of the leftover piece. If the dimensions of the room require smaller pieces than 20cm to complete your floor, these pieces should be glued together in the locking system. The floor pieces should never be glued to the subfloor, as this disturbs the expansion of the floating floor.

# pure installation manual



The click elements of the new row, need to be positioned, exactly in the middle of two locks of the previous row. From second row on, always connect the short side first and then the long side.

To install the last row, position a loose panel exactly on top of the last laid. Place another panel upside down up to the wall and mark the panel underneath. Cut the marked panel to size and fit in place. This method should be repeated for each panel until the last row is complete.

For door mouldings, lay a panel face down next to the door moulding. Saw the panel, then slide the plank under the moulding. Make sure the moulding doesn't support on the floor.

## 4. FINISHING

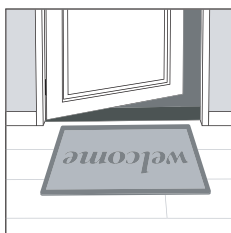


Use Pure accessories for a perfect result. To allow the floating floor the necessary contraction and expansion we advise against fixing any accessory on the floor. Never attach skirting boards directly onto the installed floor. Permanent sealing products (silicone) should never be used to seal up the gap between the floor covering and skirting boards/profiles. Joints on fixed building elements (door frames, heating pipes, etc.) should never be completely sealed with elastic filler. You should use filler twine as a basis for filling expansion joints. Another option is to make use of end profiles to seal of expansion joints. Profiles, doorstops and suchlike should not be screwed through the floor covering into the subfloor.

Pure skirtings have a MDF core with a CV wrapping, making the bottom side water resistant. To fully finish them as water resistant, seal the vertical edges/ends with a water resistant glue or sealant.

## 5. MAINTENANCE

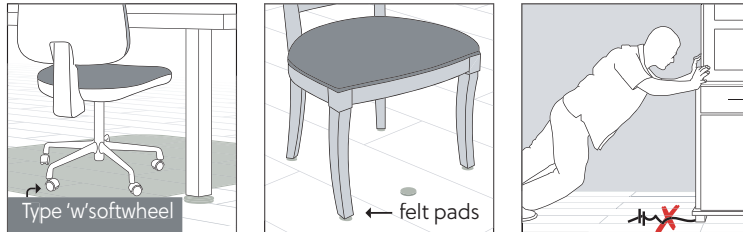
Consider saving a few planks for any potential future repairs.



### DOORMATS

To keep your floor in good condition, it is important to place non-rubber backed doormats at all entrances, to prevent dirt or grit on your floor. Placing doormats will eliminate abrasive particles driven by footwear and will reduce damage. Do not use rubber-backed mats, as long-lasting contact with rubber can cause permanent discolouration. Never place doormats on a wet floor.

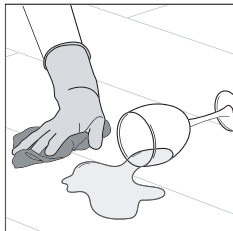
# pure installation manual



Furniture legs, fitness appliances, etc. should be fitted with soft, non-rubber casters, to avoid permanent damage to your floor. Use a suitable desk mat under rolling office chairs. You should use felt pads or protective feet for items that contain rubber, such as chair legs, furniture legs, fitness appliances, etc. Use white felt pads, coloured felt might cause stains.

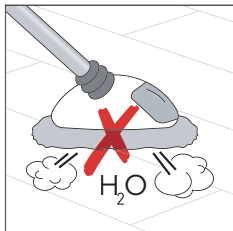
Every type of flooring is subject to discolouration after long-lasting exposure to sunlight. Protect your floor by using curtains and blinds.

## CLEANING



### Initial cleaning

First remove all dirt and dust from the flooring with a brush or vacuum cleaner. Then clean with water and a neutral appropriate cleaning agent, at least twice and until the water stays clean. We strongly recommend using BERRYALLOC Vinyl Planks cleaning products. Any other cleaning product may contain agents that damage resilient floor surfaces. The coating of the top-layer makes a specific treatment after installation unnecessary.



### Regular cleaning instructions

Vacuum or wet mop. When required, use a solution of clean water and mild, pH-neutral detergent or domestic floor cleaning emulsion. We strongly recommend using BERRYALLOC Vinyl Planks cleaning products, as other products may damage your flooring surface. Rinse thoroughly and soak up residual water.

NB: the floor can feel more slippery when it becomes wet. Spots, marks and spillages should be wiped up as soon as possible. Do not use chlorinated solvents. Never use wax or varnish coating. Never use maintenance products that contain wax or oil. Do not clean the floor with steam products (ex. steam mop).

## 6. WARRANTY INFO AND CONDITIONS

The warranty is only valid when the installation guide is followed carefully. More information about the warranty can be found in the 'Warranty document' of Pure on the website ([www.berryalloc.com](http://www.berryalloc.com)).

## 7. LEGAL INFORMATION

This document presents the general installation instructions, based on the latest available information. For the best result, and to ensure the validity of the guarantee, these instructions should be followed carefully.

This document replaces all previous versions and is valid until further notice. This information is a representation of the technical knowhow at the time that this document was produced/published and may be amended, complemented or replaced at any time. The version that should be followed is the one valid at the time of installation. Please check for updates at: [www.berryalloc.com](http://www.berryalloc.com)